



Rogue River Organics

Talent, OR 97540

Sample 150-112023-277

Alaska Rainbow

Batch/Lot # AR623.61

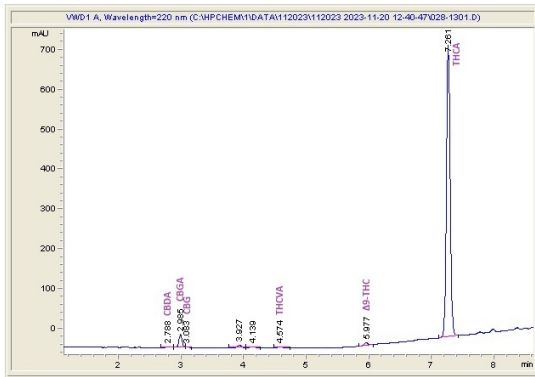
Sample Submitted: 11-20-2023; Report Date: 11-28-2023

Alaska Rainbow

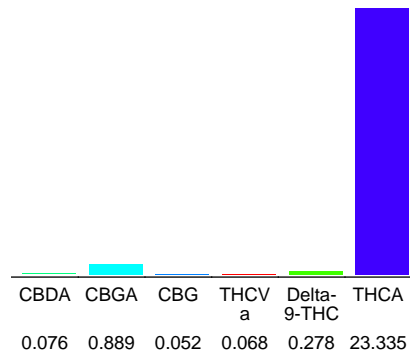
Plant Material: Hemp Flower

Batch/Lot # AR623.61

Chromatogram



Cannabinoid Profile



Cannabinoid Profile by HPLC

**0.28%**  
Delta-9-THC

**0.00%**  
CBD

**24.70%**  
Total Cannabinoids

Cannabinoid	% wt	mg/g
CBDA	0.076	0.76
CBGA	0.889	8.89
CBG	0.052	0.52
THCVa	0.068	0.68
Delta-9-THC	0.278	2.78
THCA	23.34	233.35
<b>Total Cannabinoids</b>	<b>24.70</b>	<b>247.0</b>
<b>Calculated Total THC</b>	<b>20.74</b>	<b>207.43</b>
<b>Calculated CBD Yield</b>	<b>0.07</b>	<b>0.67</b>

Calculated Total THC = Delta-9-THC + 0.877 \* THCA

Calculated Maximum CBD Yield = CBD + 0.877 \* CBDA

**Marin Analytics, LLC**

250 Bel Marin Keys Blvd, Suite D4  
Novato, CA 94949

833-321-TEST / info@marinanalytics.com

**Mike Clemmons**  
Lab Manager