



Rogue River Organics

Talent, OR 97540

Sample 150-082323-196

Cereal Milk (THCA Hemp)

Batch/Lot # CM645.56

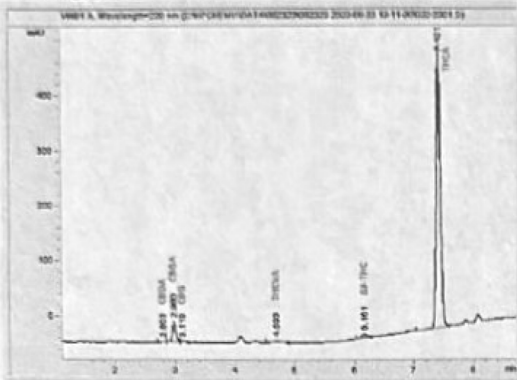
Sample Submitted: 08-23-2023; Report Date: 08-26-2023

Cereal Milk (THCA Hemp)

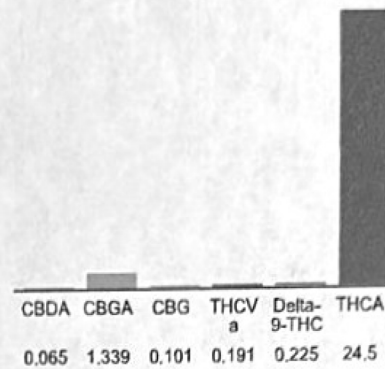
Plant Material: Flower

Batch/Lot # CM645.56

Chromatogram



Cannabinoid Profile



Cannabinoid Profile by HPLC

0.23%
Delta-9-THC

0.00%
CBD

26.42%
Total Cannabinoids

Cannabinoid	% wt	mg/g
CBDA	0.065	0.65
CBGA	1.339	13.39
CBG	0.101	1.01
THCVa	0.191	1.91
Delta-9-THC	0.225	2.25
THCA	24.5	245.0
Total Cannabinoids	26.42	264.2
Calculated Total THC	21.71	217.12
Calculated CBD Yield	0.06	0.57

Calculated Total THC = Delta-9-THC + 0.877 * THCA
Calculated Maximum CBD Yield = CBD + 0.877 * CBDA

Marin Analytics, LLC
250 Bel Marin Keys Blvd, Suite D4
Novato, CA 94949

833-321-TEST / info@marinanalytics.com

Sara Biancalana
Sara Biancalana
Chief Scientist

This sample has been tested by Marin Analytics, LLC using valid testing methodologies and a quality system. Values reported relate only to the sample tested. Marin Analytics, LLC makes no claims as to the efficacy, safety, or other risks associated with any detected or non-detected levels of any compounds reported herein. This Certificate shall not be reproduced except in full without the written approval of Marin Analytics, LLC. Copyright 2023 Marin Analytics, LLC All Rights Reserved.