

Rogue River Organics

Sample 150-040224-359

Rainbow Runtz

Batch/Lot # RR703.87

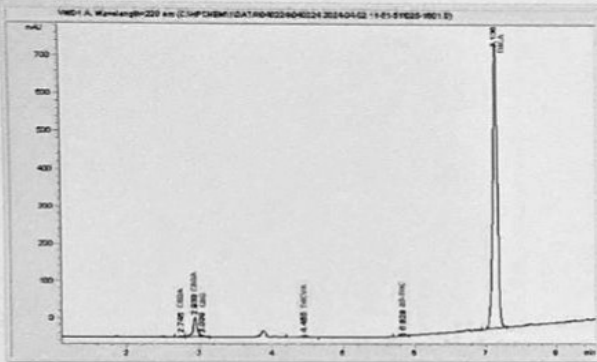
Sample Submitted: 04-02-2024; Report Date: 04-08-2024

Rainbow Runtz

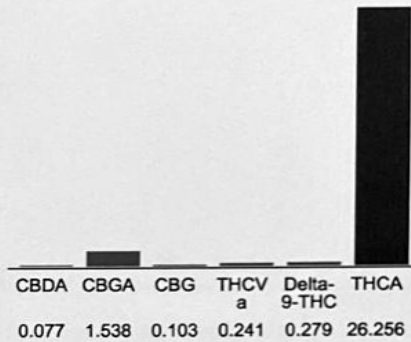
Batch/Lot # RR703.87

Plant Material: Hemp Flower

Chromatogram



Cannabinoid Profile



Cannabinoid Profile by HPLC

0.28%
Delta-9-THC

0.00%
CBD

28.49%
Total Cannabinoids

Cannabinoid	% wt	mg/g
CBDA	0.077	0.77
CBGA	1.538	15.38
CBG	0.103	1.03
THCVa	0.241	2.41
Delta-9-THC	0.279	2.79
THCA	26.26	262.56
Total Cannabinoids	28.49	284.9
Calculated Total THC	23.31	233.06
Calculated CBD Yield	0.07	0.68

Calculated Total THC = Delta-9-THC + 0.877 * THCA
 Calculated Maximum CBD Yield = CBD + 0.877 * CBDA

Marin Analytics, LLC
 250 Bel Marin Keys Blvd, Suite D4
 Novato, CA 94949

833-321-TEST / info@marinanalytics.com

Mike Clemmons
 Lab Manager

This sample has been tested by Marin Analytics, LLC using valid testing methodologies and a quality system. Values reported relate only to the sample tested. Marin Analytics, LLC makes no claims as to the efficacy, safety, or other risks associated with any detected or non-detected levels of any compounds reported herein. This Certificate shall not be reproduced except in full without the written approval of Marin Analytics, LLC. Copyright 2023 Marin Analytics, LLC All Rights Reserved.