



Rogue River Organics

Talent, OR 97540

Sample 150-082323-187

Tear Gas (Hemp Flower)

Batch/Lot # TG645.74

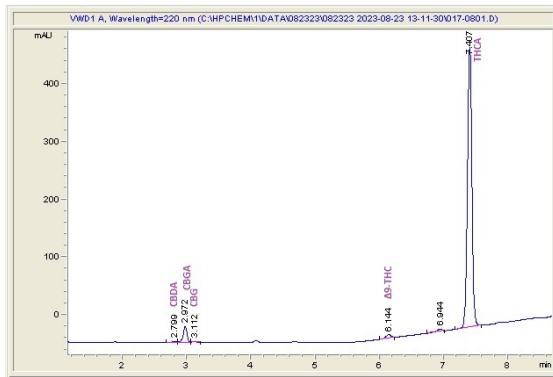
Sample Submitted: 08-23-2023; Report Date: 08-26-2023

Tear Gas (Hemp Flower)

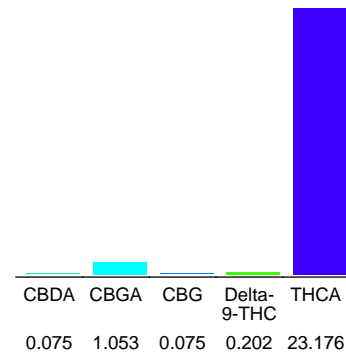
Plant Material: Flower

Batch/Lot # TG645.74

Chromatogram



Cannabinoid Profile



Cannabinoid Profile by HPLC

0.20%
Delta-9-THC

0.00%
CBD

24.58%
Total Cannabinoids

Cannabinoid	% wt	mg/g
CBDA	0.075	0.75
CBGA	1.053	10.53
CBG	0.075	0.75
Delta-9-THC	0.202	2.02
THCA	23.18	231.76
Total Cannabinoids	24.58	245.8
Calculated Total THC	20.53	205.27
Calculated CBD Yield	0.07	0.66

Calculated Total THC = Delta-9-THC + 0.877 * THCA

Calculated Maximum CBD Yield = CBD + 0.877 * CBDA

Marin Analytics, LLC

250 Bel Marin Keys Blvd, Suite D4
Novato, CA 94949

833-321-TEST / info@marinanalytics.com

Sara Biancalana
Chief Scientist