



Rogue River Organics

Talent, OR 97540

Sample 150-090723-224

Pie Face (THCA Hemp)

Batch/Lot # PF644.56

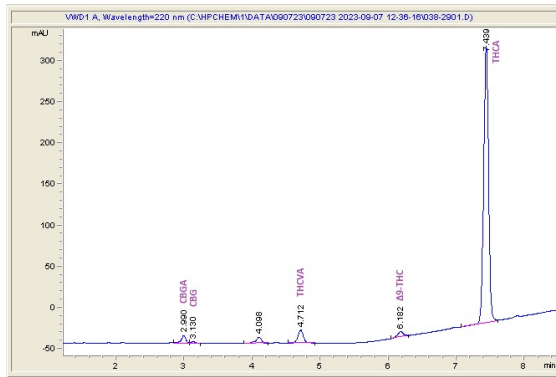
Sample Submitted: 09-07-2023; Report Date: 09-10-2023

Pie Face (THCA Hemp)

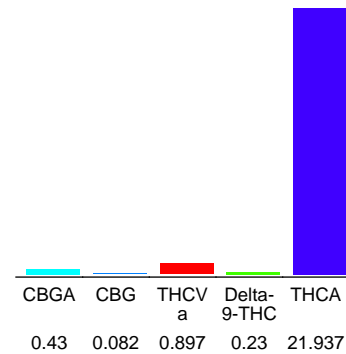
Plant Material: Flower

Batch/Lot # PF644.56

Chromatogram



Cannabinoid Profile



Cannabinoid Profile by HPLC

**0.23%**  
Delta-9-THC

**0.00%**  
CBD

**23.58%**  
Total Cannabinoids

Cannabinoid	% wt	mg/g
CBGA	0.43	4.3
CBG	0.082	0.82
THCVa	0.897	8.97
Delta-9-THC	0.23	2.3
THCA	21.94	219.37
<b>Total Cannabinoids</b>	<b>23.58</b>	<b>235.8</b>
<b>Calculated Total THC</b>	<b>19.47</b>	<b>194.69</b>
<b>Calculated CBD Yield</b>	<b>0.00</b>	<b>0.00</b>

Calculated Total THC = Delta-9-THC + 0.877 \* THCA  
Calculated Maximum CBD Yield = CBD + 0.877 \* CBDA

**Marin Analytics, LLC**

250 Bel Marin Keys Blvd, Suite D4  
Novato, CA 94949

833-321-TEST / info@marinanalytics.com

**Sara Biancalana**  
Chief Scientist